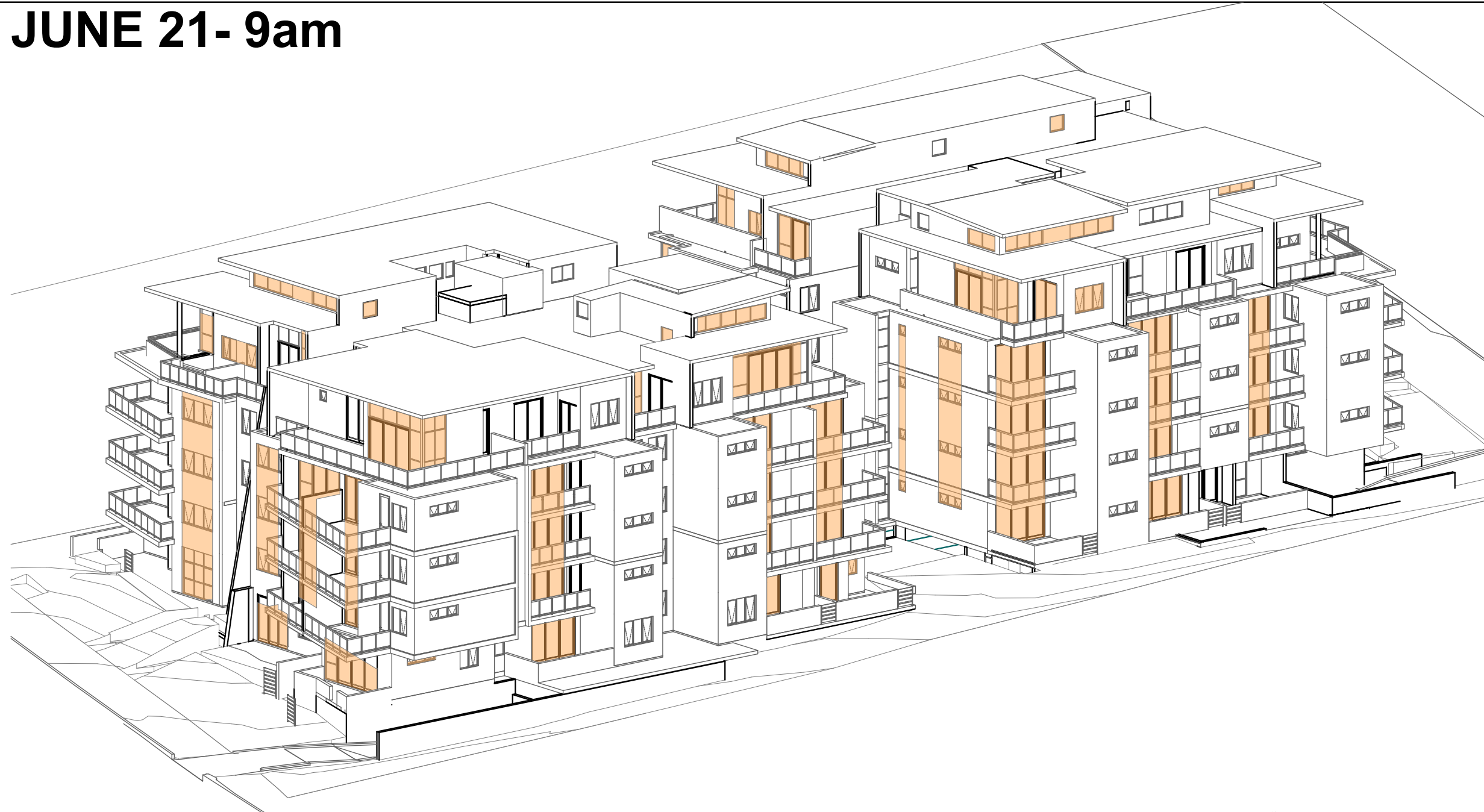
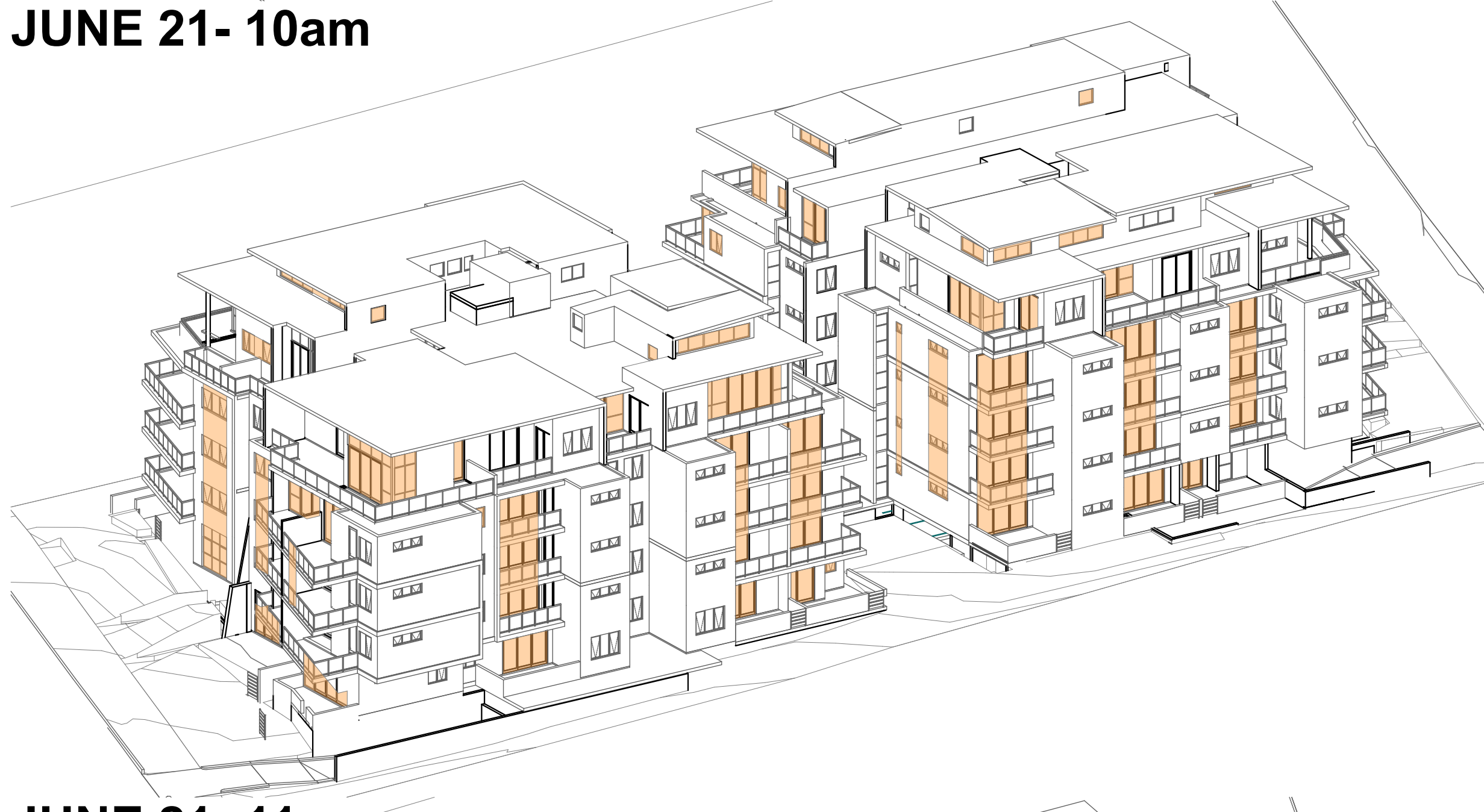


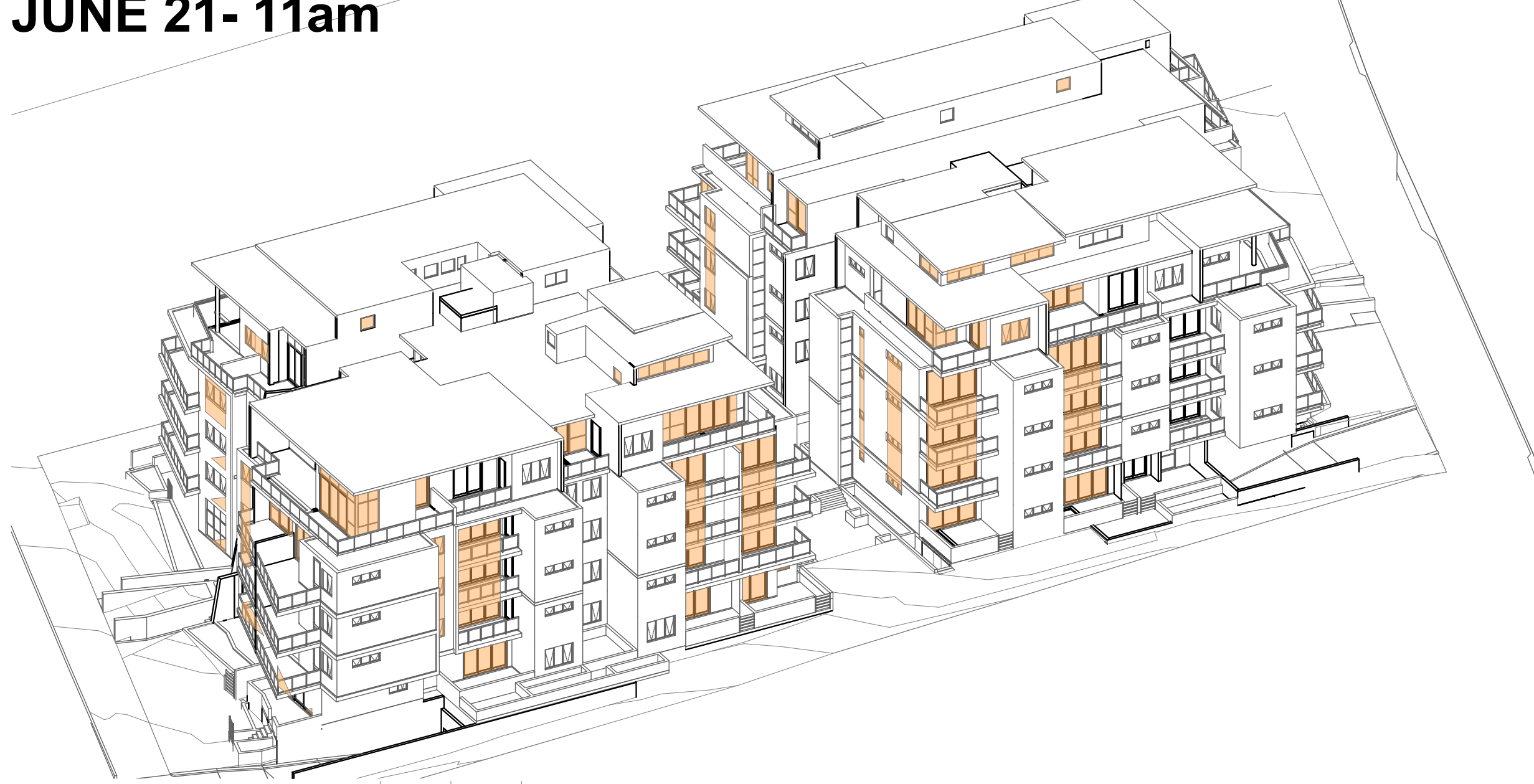
JUNE 21- 9am



JUNE 21- 10am



JUNE 21- 11am



JUNE 21- 12pm



JUNE 21- 1pm



JUNE 21- 2pm



DA-F	ISSUED FOR ADDITIONAL INFORMATION	OCT 2016	AH	AHM
DA-E	ISSUED FOR ADDITIONAL INFORMATION	OCT 2016	AH	AHM
DA-D	AMENDMENTS AS PER RFI DATED 22nd SEP & MEETING DATED 26th SEP 2016	SEP 2016	MR	AHM
DA-C	ISSUED FOR ADDITIONAL INFORMATION	SEP 2016	AH	AHM
DA-C1	ISSUED FOR DIMENSION CLARIFICATION	AUG 2016	AH	AHM
DA-B	ISSUED FOR ADDITIONAL INFORMATION	JUL 2016	AH	AHM
DA-A	ISSUED FOR DEVELOPMENT APPLICATION	DEC 2015	AH	AHM
ISSUE		DATE	DRAWN	CHECKED
AMENDMENT				
Print Date: Monday, 14 November 2016, 11:27 am				



GENERAL NOTES:
Figured dimensions shall be taken in preference to scaling. Drawing to be read in conjunction with information on first page. Check all dimensions and levels on site before commencing work or ordering materials. All existing ground lines & trees location are approximate, therefore to be verified on-site by the builder. Any discrepancies to be verified back to Zhinar Architects before proceeding. All workmanship and materials shall comply with all relevant codes, ordinances, Australian Standards and manufacturer's instructions. Unless noted 'Issued for Construction', drawing not to be used for construction.

COPYRIGHT: INFORMATION ON THIS DRAWING IS THE COPYRIGHT OF ZHINAR ARCHITECTS. COPYING OR USING THIS DRAWING IN WHOLE OR PART WITHOUT WRITTEN PERMISSION INFRINGES COPYRIGHT. ALL ART / GRAPHIC REPRESENTATIONS ARE INDICATIVE ONLY.

NORTH:

PROJECT STATUS:

Development Application

Zhinar

SHEET TITLE:

Solar Study 1

DESIGNED: AHM
DRAWN: AH
COMMENTED:
SCALE: AS NOTED
PRINT: A1 SHEET
L.G.A: Hornsby Council



PROJECT:
Residential Flats Building
18-22 Lords Avenue + 421-425
Pacific Hwy, Asquith, NSW 2077
JOB No.:
8433 DA:F 35

ISSUE:
F

JUNE 21- 3pm



SEPP65 COMPLIANCE & STORAGE SCHEDULE

UNIT NUMBER & TYPE	CROSS VENTILATION	SOLAR ACCESS	TOTAL HOURS (3hrs MIN)	SOLAR COMPLIANCE	INTERNAL STORAGE (m3)	BASEMENT STORAGE (m3)	TOTAL STORAGE (m3)
A-G01 (3 BED)	YES	9:00 - 15:00	6	YES	7	3	10
A-G02 (2BED)	NO	9:00 - 14:00	5	YES	6	2	8
A-G03 (2BED)	NO	9:00 - 14:00	5	YES	4	4	8
A-G04 (2BED)	YES	9:00 - 11:00	2	YES	4	4	8
A-G05 (1BED)	NO	9:00 - 11:00	2	YES	3	3	6
A-G06 (2BED)	YES	9:00 - 11:00	2	YES	6	2	8
A-G07 (2BED)	NO	-	0	NO	4	4	8
A-G08 (2BED)	NO	-	0	NO	5	3	8
A-G09 (2BED)	YES	13:00-14:00	1	NO	4	4	8
A-101 (2BED)	YES	9:00 - 15:00	6	YES	6	2	8
A-102 (2BED)	NO	9:00 - 14:00	5	YES	5	3	8
A-103 (2BED)	NO	9:00 - 14:00	5	YES	4	4	8
A-104 (2BED)	YES	9:00, 11:00 - 15:00	4.5	YES	6	2	8
A-105 (2BED)	YES	9:00 - 11:00	2	YES	5	3	8
A-106 (2BED)	YES	9:00- 11:00	2	YES	6	2	8
A-107 (2BED)	YES	-	0	NO	4	4	8
A-108 (2BED)	NO	-	0	NO	5	3	8
A-109 (2BED)	YES	13:00-14:00	1	NO	4	4	8
A-110 (1BED)	NO	-	0	NO	3	3	6
A-201 (2BED)	YES	9:00 - 15:00	6	YES	6	2	8
A-202 (2BED)	NO	9:00 - 14:00	5	YES	5	3	8
A-203 (2BED)	NO	9:00 - 14:00	5	YES	4	4	8
A-204 (2BED)	YES	9:00, 11:00 - 15:00	4.5	YES	6	2	8
A-205 (2BED)	YES	9:00 - 11:00	2	YES	5	3	8
A-206 (2BED)	YES	9:00- 11:00	2	YES	6	2	8
A-207 (2BED)	YES	-	0	NO	4	4	8
A-208 (2BED)	NO	-	0	NO	5	3	8
A-209 (2BED)	YES	13:00-14:00	1	NO	4	4	8
A-210 (1BED)	NO	-	0	NO	3	3	6
A-301 (2BED)	YES	9:00 - 15:00	6	YES	6	2	8
A-302 (2BED)	NO	9:00 - 14:00	5	YES	5	3	8
A-303 (2BED)	NO	9:00 - 14:00	5	YES	4	4	8
A-304 (2BED)	YES	9:00 - 15:00	6	YES	6	2	8
A-305 (2BED)	YES	9:00 - 11:00	2	YES	5	3	8
A-306 (2BED)	YES	9:00- 11:00	2	YES	6	2	8
A-307 (2BED)	YES	-	0	NO	4	4	8
A-308 (2BED)	NO	-	0	NO	5	3	8
A-309 (2BED)	YES	12:00-14:00	2	YES	4	4	8
A-310 (1BED)	NO	-	0	NO	3	3	6
A-401 (3BED)	YES	9:00 - 15:00	6	YES	7	3	10
A-402 (3BED)	YES	9:00 - 14:00	5	YES	6	4	10
A-403 (2BED)	YES	9:00 - 15:00	6	YES	4	4	8
A-404 (1BED)	YES	9:00 - 15:00	6	YES	4	2	6
A-405 (2BED)	YES	9:00 - 11:00	2	YES	8	0	8
A-406 (2BED)	YES	13:00 - 15:00	2	YES	4	4	8
A-407 (2BED)	YES	13:00 - 15:00	2	YES	4	4	8

UNIT NUMBER & TYPE	CROSS VENTILATION	SOLAR ACCESS	TOTAL HOURS (3hrs MIN)	SOLAR COMPLIANCE	INTERNAL STORAGE (m3)	BASEMENT STORAGE (m3)	TOTAL STORAGE (m3)
B-G01 (3BED)	YES	13:00 - 15:00	2	YES	5	5	10
B-G02 (1BED)	NO	9:00 - 15:00	6	YES	3	3	6
B-G03 (2BED)	NO	9:00 - 15:00	6	YES	4	4	8
B-G04 (2 BED)	YES	9:00 - 14:00	5	YES	4	4	8
B-G05 (3BED)	YES	-	0	NO	5	5	10
B-G06 (2BED)	NO	-	0	NO	5	3	8
B-G07 (2BED)	NO	-	0	NO	4	4	8
B-G08 (3BED)	YES	13:00 - 15:00	2	YES	6	4	10
B-G09 (1BED)	YES	13:00 - 15:00	2	YES	3	3	6
B-101 (2BED)	YES	13:00 - 15:00	2	YES	6	2	8
B-102 (2BED)	YES	9:00 - 13:00	4	YES	4	4	8
B-103 (2BED)	NO	9:00 - 15:00	6	YES	4	4	8
B-104 (2BED)	YES	9:00 - 14:00	5	YES	4	4	8
B-105 (1BED)	NO	-	0	NO	3	3	6
B-106 (2 BED)	YES	11:00 - 12:00	1	NO	5	3	8
B-107 (2BED)	NO	-	0	NO	5	3	8
B-108 (2BED)	NO	-	0	NO	4	4	8
B-109 (2BED)	YES	13:00 - 15:00	2	YES	4	4	8
B-110 (2 BED)	YES	13:00 - 15:00	2	YES	5	3	8
B-201 (2BED)	YES	13:00 - 15:00	2	YES	6	2	8
B-202 (2BED)	YES	9:00 - 13:00	4	YES	4	4	8
B-203 (2BED)	NO	9:00 - 15:00	6	YES	4	4	8
B-204 (2BED)	YES	9:00 - 14:00	5	YES	4	4	8
B-205 (1BED)	NO	-	0	NO	3	3	6
B-206 (2 BED)	YES	11:00 - 12:00	1	NO	5	3	8
B-207 (2BED)	NO	-	0	NO	5	3	8
B-208 (2BED)	NO	-	0	NO	4	4	8
B-209 (2BED)	YES	13:00 - 15:00	2	YES	4	4	8
B-210 (2 BED)	YES	13:00 - 15:00	2	YES	5	3	8
B-301 (2BED)	YES	12:00 - 15:00	3	YES	6	2	8
B-302 (2BED)	YES	9:00 - 14:00	4	YES	4	4	8
B-303 (2BED)	NO	9:00 - 15:00	6	YES	4	4	8
B-304 (2BED)	YES	9:00 - 15:00	6	YES	4	4	8
B-305 (1BED)	NO	-	0	NO	3	3	6
B-306 (2 BED)	YES	9:00 - 11:00	2	YES	5	3	8
B-307 (2BED)	NO	-	0	NO	5	3	8
B-308 (2BED)	NO	-	0	NO	4	4	8
B-309 (2BED)	YES	13:00 - 15:00	2	YES	4	4	8
B-310 (2 BED)	YES	13:00 - 15:00	2	YES	5	3	8
B-401 (3BED)	YES	13:00 - 15:00	2	YES	5	5	10
B-402 (3BED)	YES	9:00 - 15:00	6	YES	5	5	10
B-403 (3BED)	YES	9:00 - 15:00	6	YES	5	5	10
B-404 (1BED)	YES	9:00 - 11:00	2	YES	3	3	6
B-405 (3BED)	YES	9:00 - 11:00	2	YES	5	5	10
B-406 (3BED)	YES	13:00 - 15:00	2	YES	5	5	10
B-407 (1BED)	YES	13:00 - 15:00	2	YES	3	3	6
	59/92 UNITS			64/92 UNITS			
	64.00%			70.00%			

GENERAL NOTES:
Figured dimensions shall be taken in preference to scaling. Drawing to be read in conjunction with information on first page. Check all dimensions and levels on site before commencing work or ordering materials. All existing ground lines & trees location are approximate, therefore to be verified on-site by the builder. Any discrepancies to be verified back to Zhinar Architects before proceeding. All workmanship and materials shall comply with all relevant codes, ordinances, Australian Standards and manufacturer's instructions. Unless noted 'Issued for Construction', drawing not to be used for construction.

COPYRIGHT: INFORMATION ON THIS DRAWING IS THE COPYRIGHT OF ZHINAR ARCHITECTS. COPYING OR USING THIS DRAWING IN WHOLE OR PART WITHOUT WRITTEN PERMISSION INFRINGES COPYRIGHT. ALL ART / GRAPHIC REPRESENTATIONS ARE INDICATIVE ONLY.



DA-F	ISSUED FOR ADDITIONAL INFORMATION	OCT 2016	AH	AHM
DA-E	ISSUED FOR ADDITIONAL INFORMATION	OCT 2016	AH	AHM
DA-D	AMENDMENTS AS PER RFI DATED 22nd SEP & MEETING DATED 26th SEP 2016	SEP 2016	MR	AHM
DA-C	ISSUED FOR ADDITIONAL INFORMATION	SEP 2016	AH	AHM
DA-C1	ISSUED FOR DIMENSION CLARIFICATION	AUG 2016	AH	AHM
DA-B	ISSUED FOR ADDITIONAL INFORMATION	JUL 2016	AH	AHM
DA-A	ISSUED FOR DEVELOPMENT APPLICATION	DEC 2015	AH	AHM
ISSUE		DATE	DRAWN	CHECKED
	AMENDMENT			
Print Date: Monday, 14 November 2016, 11:27 am				
Drawing is NOT VALID or issued for use, unless checked.				

NORTH:

PROJECT STATUS:

Development Application

Zhinar

SHEET TITLE:

Solar Study 2 + Compliance Schedule

DESIGNED: AHM DRAWN: AH COMMENTED: SCALE: AS NOTED PRINT: A1 SHEET L.G.A: Hornsby Council



PROJECT:

Residential Flats Building
18-22 Lords Avenue + 421-425
Pacific Hwy, Asquith, NSW 2077
JOB No.: 8433 DA:F 36

ISSUE: F

